



 **Carmex**
Precision Tools Ltd.
The optimal tools for your industry™

NEWS

2022-23



Carmex USA new Headquarters



Established in North America in 2004, Carmex Precision Tools, LLC, recently moved operations into a new custom-designed facility located in Hartford, Wisconsin.

The new North American headquarters offers improved service to customers and distributors through an expanded inventory and order processing area to speed deliveries, a conference and training module and expanded space for applications engineers and administration. Incorporating improved inventory control and data systems, the new building will accommodate anticipated growth in Carmex product lines and sales in the North American market.

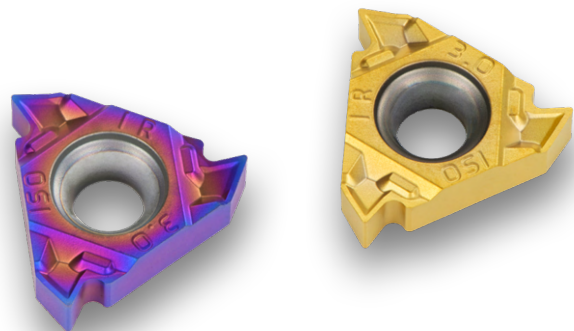
Type - K Sintered Threading Inserts

A new line of Sintered Thread Turning Inserts with chip breaker for high performance in a wide range of materials.

Type - K inserts are offered in a wide range of popular thread standards.

Features:

- Effective chip control
- Optimal edge security
- High wear resistance
- Inserts to be used with standard thread turning toolholders



Swiss-Line

4 Cutting Edges G4 Turning Insert and Toolholders
For grooving, parting-off and threading applications

Benefits:

- High productivity and cost efficient due to four cutting edges
- High accuracy and repeatability due to fully ground inserts

Features and Applications:

- Strong and stable clamping due to unique insert shape and holder pocket
- High repeatability
- Maximum versatility - a single holder for large range of inserts
- Can be used with high machining parameters and provides high surface finish
- Internal coolant ports provide High pressure coolant to the cutting edge
- Coated holders provide abrasive resistance
- Fits a large range of diameters, from very small applications with a thin wall up to 100mm diameter



Quick Change Polygon Toolholders

For 3 cutting edges Swiss Line inserts type 19, 20 mm and G6

- External toolholders with internal coolant bore
- ISO standard (26623) compliant for toolholding systems



CMT modular tooling system

- SRCM system provides efficiency and flexibility
- Enables to assemble an optimized tools per application and eliminates the need for specials

Features and Benefits:

- High stability and accuracy
- A rigid tool assembly allows to increase cutting depth without losing stability
- Significant reduction of tool inventory
- Can be used with the standard CMT inserts C25/S35
- With internal coolant bore
- Toolholders can be used with Carmex extensions and are compatible with common toolholding systems

