

2008 NEWS NEWS

# NEWS

## 2008



**Carmex**  
Precision Tools Ltd.

## Mini Mill - Thread Solid Carbide

**UNJ and MJ were added to this developing product line**

The tools are available with internal coolant through the flutes for smooth cutting operations.



**New**



**Tools for Threading from M1.2 x 0.25**



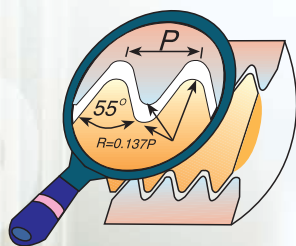
## HARDCUT

A unique line of thread milling tools designed specifically for the machining of hardened materials up to 62HRC. These tools provide high performance, improved cut and an excellent surface finish.

**New Threading M1.4 x 0.3, M1.6 x 0.35 for 3xD**



## Mill - Thread Solid Carbide



**MTZ**

**Thread Mills with Internal Coolant through the flutes**

**New**

**Whitworth BSW**

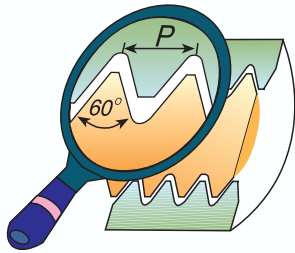
**Same Tool for Internal and External Thread**



## Mill - Thread Inserts and Toolholders

Extended product range, now offering inserts for NPS, NPSF threads.

**New**

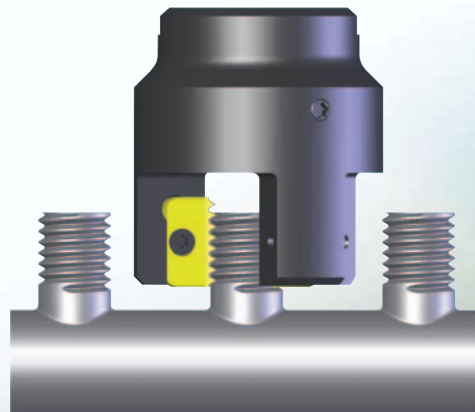


**New**

## External Multi-Insert Toolholders

Toolholders for milling external threads.  
To be used with Carmex standard Mill-Thread Inserts.

- Reduced machining time.
- Optimal coolant supply.



# Mill-Thread Solid Carbide

## For Threading and Grooving Deep Parts

**New**

- Enables machining in deep holes.
- Coolant through the flutes is very effective for deep holes.
- Spiral flutes allow smooth cutting action.
- Shorter machining time due to multi, 3 to 5, flutes.
- Longer tool life due to special multi-layer coating.

### Threading: Partial Profile 60°

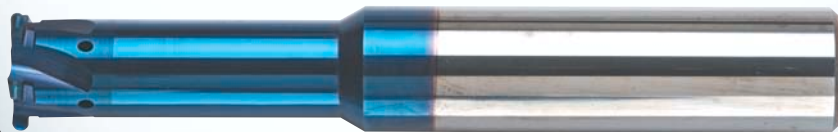
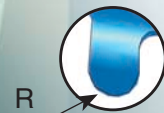
- Same tool can produce a wide range of threads and pitches.
- Same tool can produce both External and Internal threads.



### Groove Milling



### Full Radius Groove Milling



**New**

## Grooving Inserts

For external and internal Snap Ring grooves



**External & Internal**

**ER / IL**

Same insert can be used  
for EX.RH and for IN.LH.

**IR / EL**

Same insert can be used  
for IN.RH and for EX.LH.



# Type Z

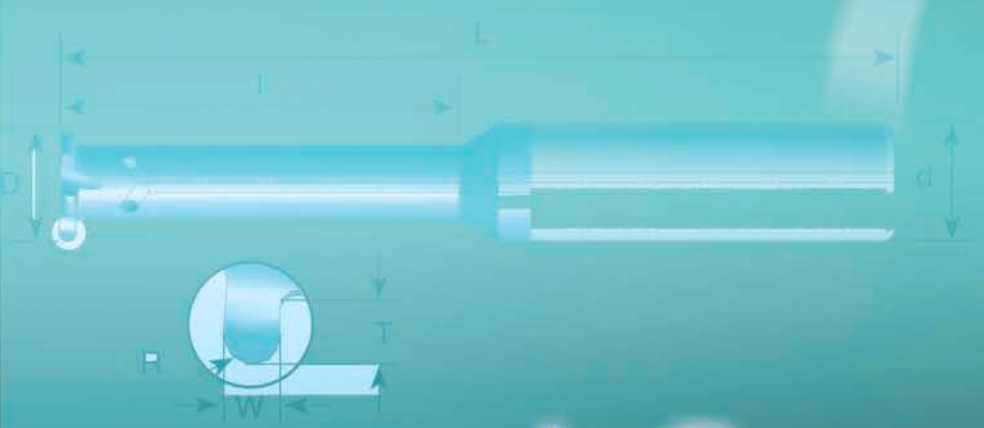
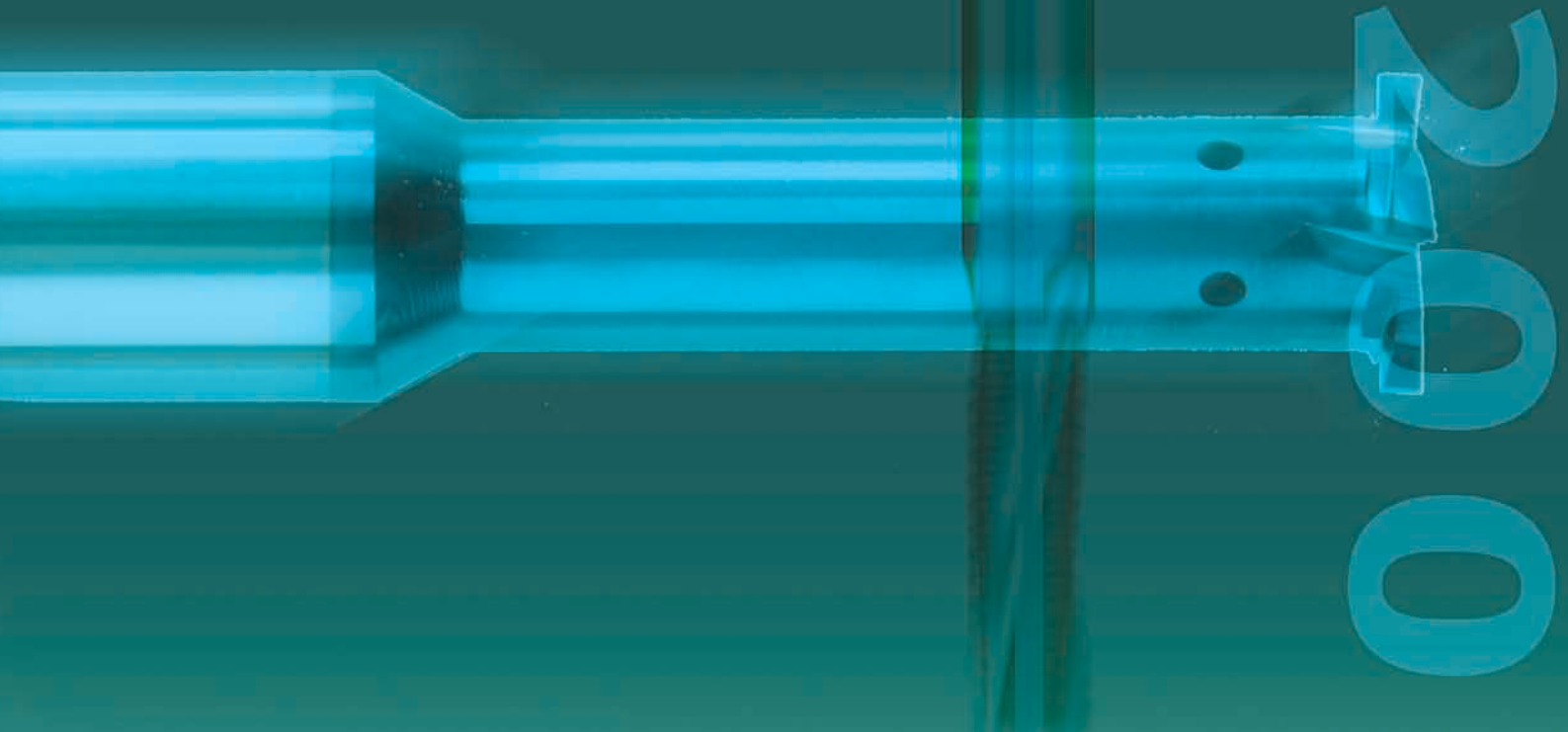
## Thick Threading Inserts

A unique line of **Thick** Thread  
Turning Inserts

Three insert's sizes: 11mm (1/4"),  
16mm (3/8"), 22mm (1/2")

**New**





1st Hacharoshet St., Maalot Industrial Zone, 24952, ISRAEL.  
Tel (972) 4-9973601, Fax (972) 4-9973604.  
E-Mail: [info@carmex.com](mailto:info@carmex.com) Web site: [www.carmex.com](http://www.carmex.com)  
Postal address: P.O.Box 404, Maalot 24952, ISRAEL

SWEN 8002

© Copyright CARMEX Precision Tools Ltd. 2008

Carmex News 03/2008